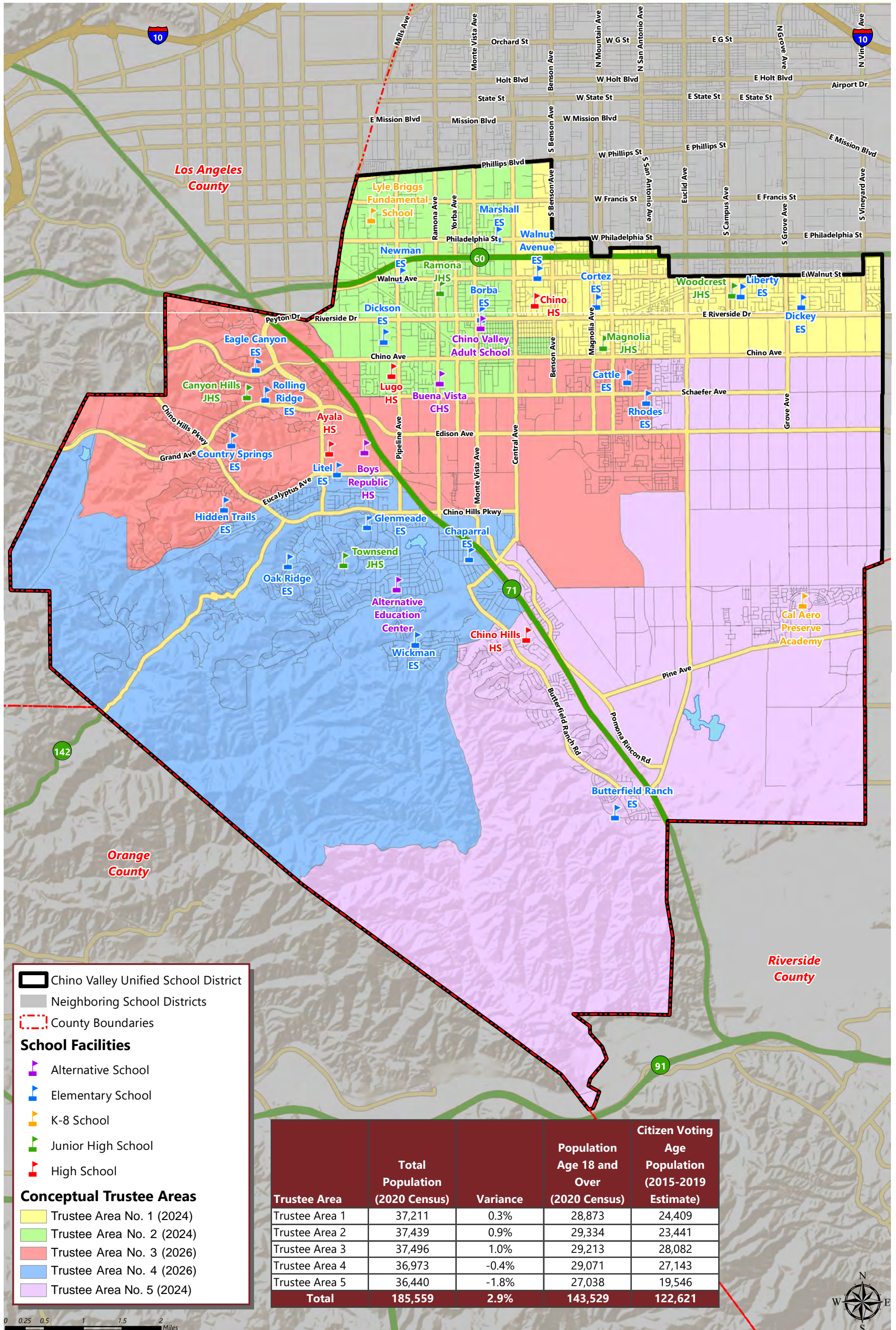


CHINO VALLEY UNIFIED SCHOOL DISTRICT

TRUSTEE AREAS



Chino Valley Unified School District

- Neighboring School Districts
- County Boundaries

School Facilities

- Alternative School
- Elementary School
- K-8 School
- Junior High School
- High School

Conceptual Trustee Areas

- Trustee Area No. 1 (2024)
- Trustee Area No. 2 (2024)
- Trustee Area No. 3 (2026)
- Trustee Area No. 4 (2026)
- Trustee Area No. 5 (2024)

Trustee Area	Total Population (2020 Census)	Variance	Population Age 18 and Over (2020 Census)	Citizen Voting Age Population (2015-2019 Estimate)
Trustee Area 1	37,211	0.3%	28,873	24,409
Trustee Area 2	37,439	0.9%	29,334	23,441
Trustee Area 3	37,496	1.0%	29,213	28,082
Trustee Area 4	36,973	-0.4%	29,071	27,143
Trustee Area 5	36,440	-1.8%	27,038	19,546
Total	185,559	2.9%	143,529	122,621

0 0.25 0.5 1 1.5 2 Miles
December 2021



CHINO VALLEY UNIFIED SCHOOL DISTRICT

CONCEPTUAL TRUSTEE AREAS - SCENARIO 1

Total Population:	185,559	Ideal Population:	37,112	Variance:	2.8%
--------------------------	----------------	--------------------------	---------------	------------------	-------------

Total Population (2020 Census)					
	Trustee Area 1	Trustee Area 2	Trustee Area 3	Trustee Area 4	Trustee Area 5
Population	37,211	37,439	37,496	36,973	36,440
Population Variance	99	327	384	-139	-672
	0.3%	0.9%	1.0%	-0.4%	-1.8%
Hispanic/Latino	61.2%	62.7%	26.9%	34.3%	29.9%
White	19.4%	20.0%	18.6%	28.3%	20.9%
Black/ African American	3.8%	3.0%	4.1%	3.4%	7.2%
American Indian/ Alaska Native	0.2%	0.2%	0.1%	0.2%	0.2%
Asian	12.4%	11.4%	46.8%	29.6%	37.0%
Native Hawaiian/ Other Pacific Islander	0.1%	0.1%	0.2%	0.1%	0.1%
Other	0.5%	0.5%	0.4%	0.6%	0.5%
Two or More Races	2.4%	2.0%	2.8%	3.5%	4.1%

Population 18 and Over (2020 Census)					
	Trustee Area 1	Trustee Area 2	Trustee Area 3	Trustee Area 4	Trustee Area 5
Population	28,873	29,334	29,213	29,071	27,038
Hispanic/Latino	57.9%	59.4%	25.1%	32.2%	27.9%
White	21.6%	22.3%	20.3%	31.1%	22.8%
Black/ African American	4.1%	3.2%	4.3%	3.7%	7.4%
American Indian/ Alaska Native	0.2%	0.3%	0.1%	0.2%	0.1%
Asian	13.3%	12.4%	47.4%	29.5%	37.7%
Native Hawaiian/ Other Pacific Islander	0.1%	0.1%	0.1%	0.1%	0.2%
Other	0.5%	0.5%	0.4%	0.5%	0.5%
Two or More Races	2.2%	1.9%	2.2%	2.7%	3.4%

Citizens by Voting Age Population Estimate (2015-2019)					
	Trustee Area 1	Trustee Area 2	Trustee Area 3	Trustee Area 4	Trustee Area 5
Population	24,409	23,441	28,082	27,143	19,546
Hispanic/Latino	57.7%	57.6%	26.3%	32.6%	30.0%
White	28.3%	29.4%	27.4%	42.1%	30.9%
Black/ African American	4.3%	4.0%	6.0%	2.8%	5.7%
American Indian/ Alaska Native	0.1%	0.0%	0.1%	0.4%	0.4%
Asian	7.8%	7.4%	35.2%	20.0%	29.8%
Native Hawaiian/ Other Pacific Islander	0.1%	0.0%	0.1%	0.1%	0.1%
Other	0.0%	0.0%	0.0%	0.0%	0.0%
Two or More Races	1.8%	1.6%	4.9%	2.0%	3.1%